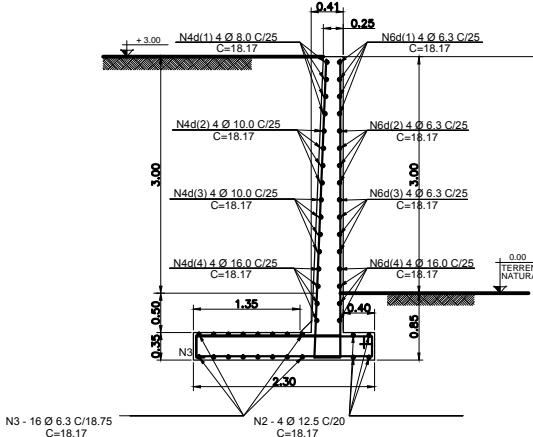
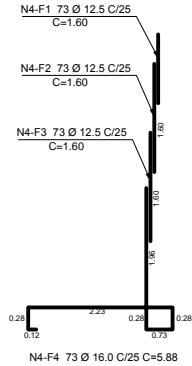


Muro Arrimo
Tipo do Arrimo = Muro em concreto armado

fck = 30 MPa fyk = 500 MPa cobrimento = 3.50 cm



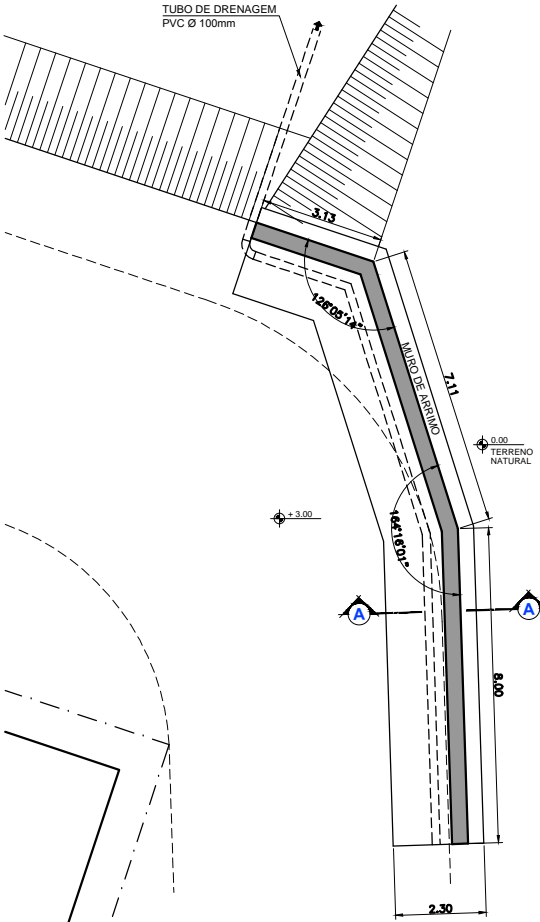
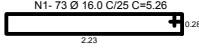
CORTE A - A

ESCALA : 1 : 50

N5- (F1 - F2 - F3)
219 Ø 8.0 C/25 C= VARIÁVEL

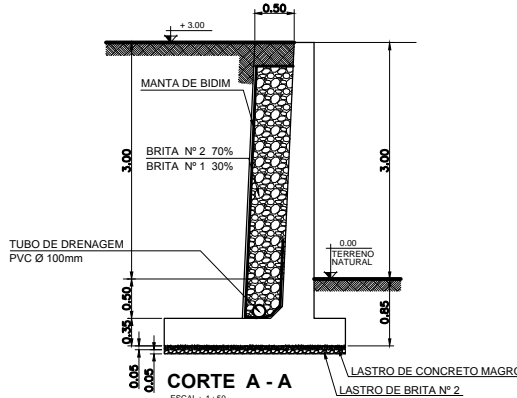
N6- (F4)
73 Ø 16.0 C/25 C= VARIÁVEL

NOTA:
DAR EMENDA NOS FERRO 60 x Ø ALTENADAS.



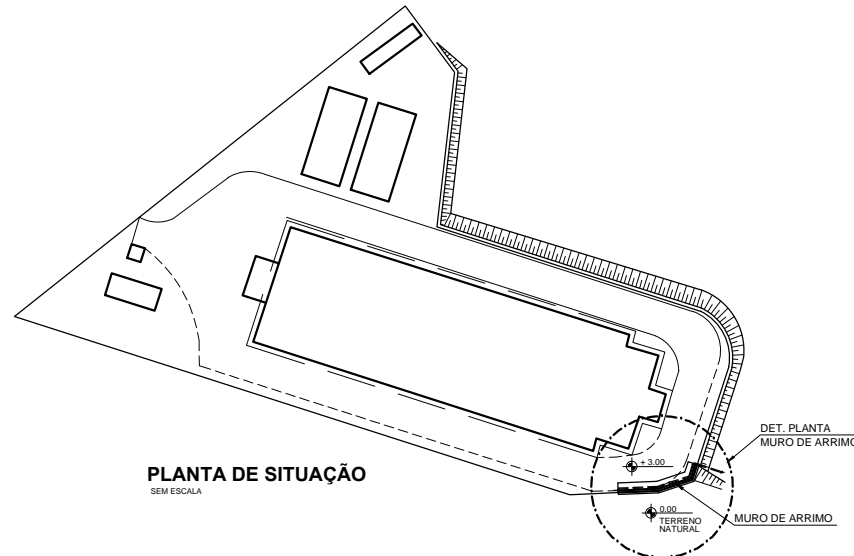
PLANTA - BAIXA
MURO DE ARRIMO

ESCALA : 1 : 100



CORTE A - A

ESCALA : 1 : 50



PLANTA DE SITUAÇÃO

SEM ESCALA

LISTA DAS POSIÇÕES DO AÇO CA-50					
MURO ARRIMO P.M. MOCOCA					
OBRA	POSICÃO	BITOLA	QUANT./M	QUANT. T.C. UNIT.	C. TOTAL
MURO ARRIMO P.M. MOCOCA	N1	16.0	4	73	5.26
	N2	12.5	4	73	1.00
	N3	6.3	16	292	1.00
	N4-F1	12.5	4	73	1.60
	N4-F2	12.5	4	73	1.60
	N4-F3	12.5	4	73	1.60
	N4-F4	16.0	4	73	5.88
	N4d-F1	8.0	4	73	1.00
	N4d-F2	10.0	4	73	1.00
	N4d-F3	10.0	4	73	1.00
	N4d-F4	16.0	4	73	1.00
	N5-F1	8.0	4	73	0.36
	N5-F2	8.0	4	73	0.36
	N5-F3	8.0	4	73	0.36
	N5-F4	16.0	4	73	0.49
	N6-F1	6.3	4	73	1.36

RESUMO POR DIÂMETRO				
BITOLA	C. TOTAL	P. UNIT.	PESO	PESO+10%
4.20	0.00	0.109	0.00	0.00
5.00	0.00	0.157	0.00	0.00
6.30	808.84	0.245	198.17	217.98
8.00	151.84	0.394	59.82	65.81
10.00	146.00	0.616	89.94	98.93
12.50	423.40	1.000	423.40	465.78
16.00	1135.15	1.977	1790.15	1949.14
20.00	0.00	2.465	0.00	0.00
25.00	0.00	6.851	0.00	0.00
PESO TOTALAÇO				2817.80